

Construction d'un immeuble de bureaux - Quai Colbert Lot 4 - 76600 LE HAVRE

SAS LE HAVRE LAFFITTE

Plan du niveau 01

SARL L2 ARCHITECTES
E-Mail : DESSIN@L2ARCHITECTES.COM

5 Avenue de Tsukuba 14 209 Hérouville Saint-Clair
Tel : 02.31.46.24.62. - Fax : 02.31.46.24.63.

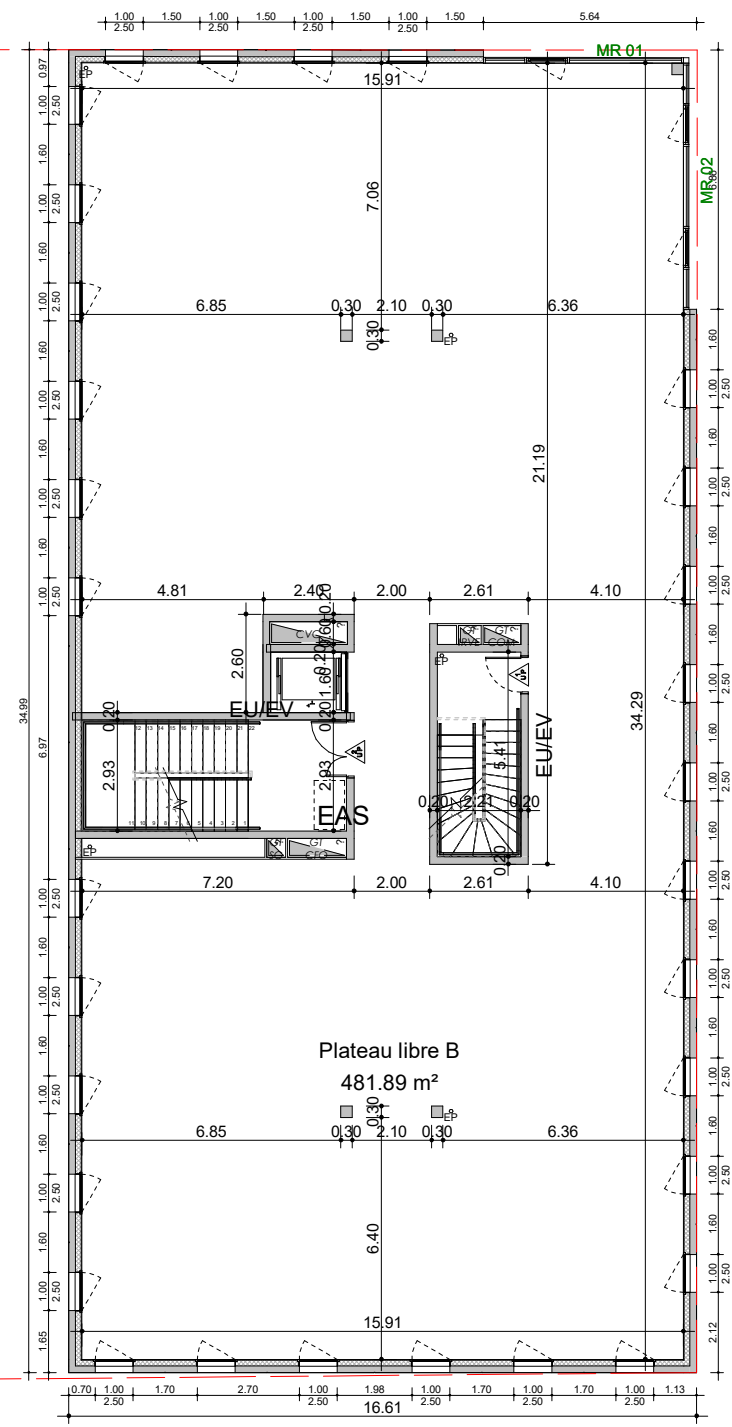
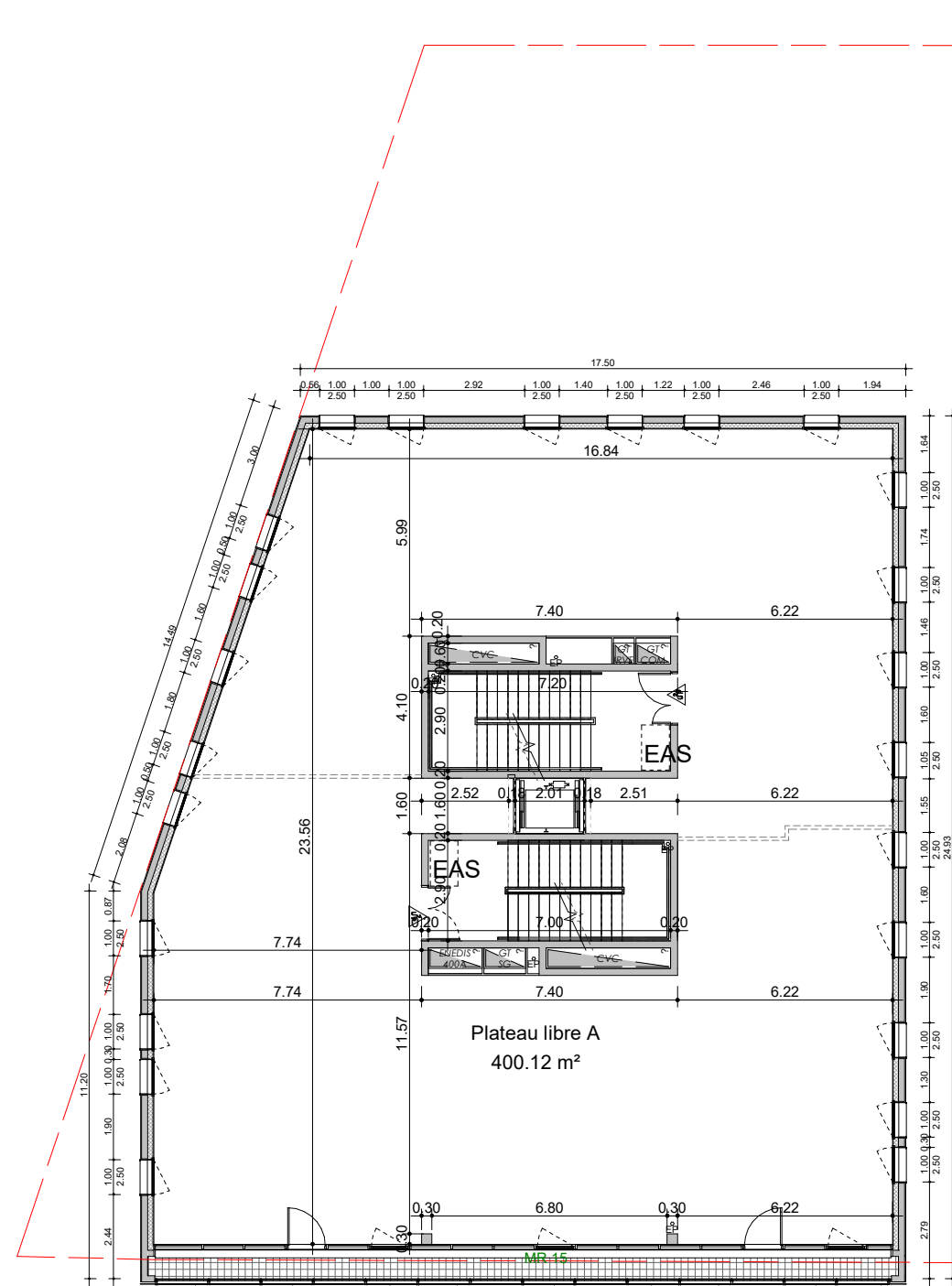
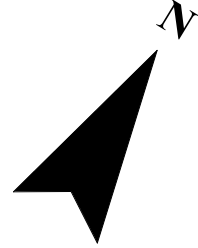
10/04/22

1 : 200

LHA 2119



TRA
101



Construction d'un immeuble de bureaux - Quai Colbert Lot 4 - 76600 LE HAVRE

SAS LE HAVRE LAFFITTE

Plan du niveau 02

SARL L2 ARCHITECTES
E-Mail : DESSIN@L2ARCHITECTES.COM

5 Avenue de Tsukuba 14 209 Hérouville Saint-Clair
Tel : 02.31.46.24.62. - Fax : 02.31.46.24.63.

10/04/22

1 : 200

LHA 2119



TRA
102